

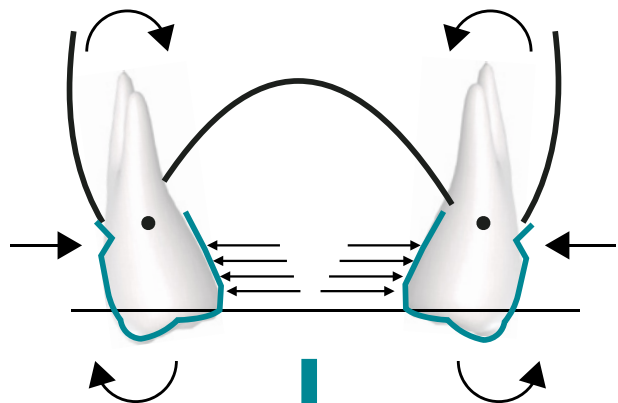
GUIDE

# Expansion

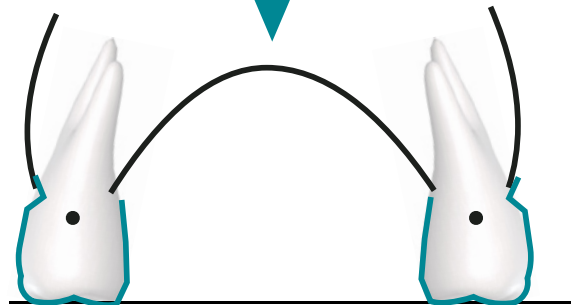
How to achieve maximal expansion needed for a specific patient

# MAXIMAL VOLUME OF EXPANSION CAN BE ACHIEVED BY COMBINING TIPPING (PALATAL TORQUE) WITH BODILY VESTIBULAR MOVEMENT.

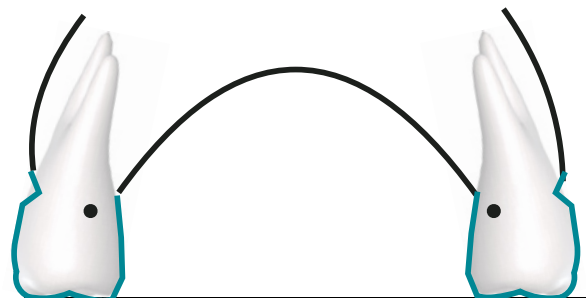
Before treatment



Expansion through tipping

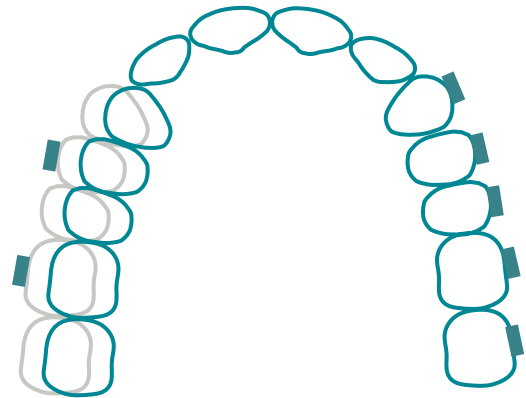


Bodily expansion

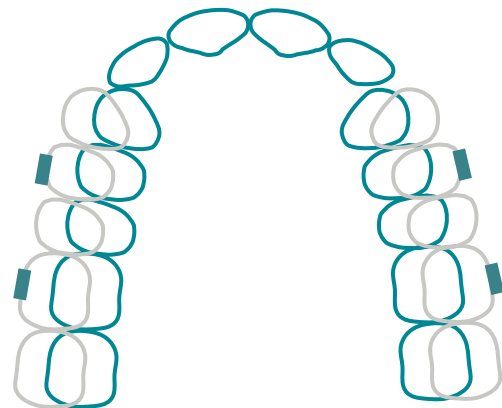


## ATTACHMENTS TO FACILITATE SYMMETRICAL/ASYMMETRICAL EXPANSION

Asymmetrical expansion



Symmetrical expansion



Choose **Predict Short** for cases with up to 2 mm crowding.

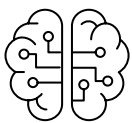
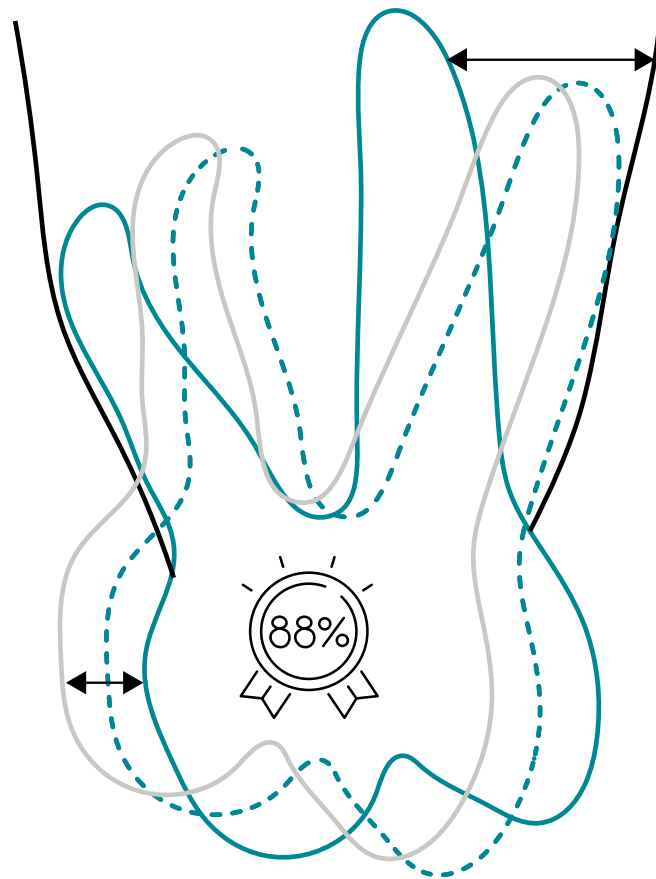
Choose **Deep CBCT®** and **Predict Full** for cases with more than 2 mm crowding.

Contact us at [3DPredict.com](https://3DPredict.com) or at [education@3dpredict.com](mailto:education@3dpredict.com) for more information or a [demo with a Clinical Consultant](#).

HOW TO ACHIEVE MAXIMAL EXPANSION NEEDED FOR A SPECIFIC PATIENT

## WITH 3D PREDICT® ALIGNERS EXPANSION PREDICTABILITY IS 88%

(88% cases without refinements).



AI-Driven tooth movement staging



Deep CBCT® Analysis

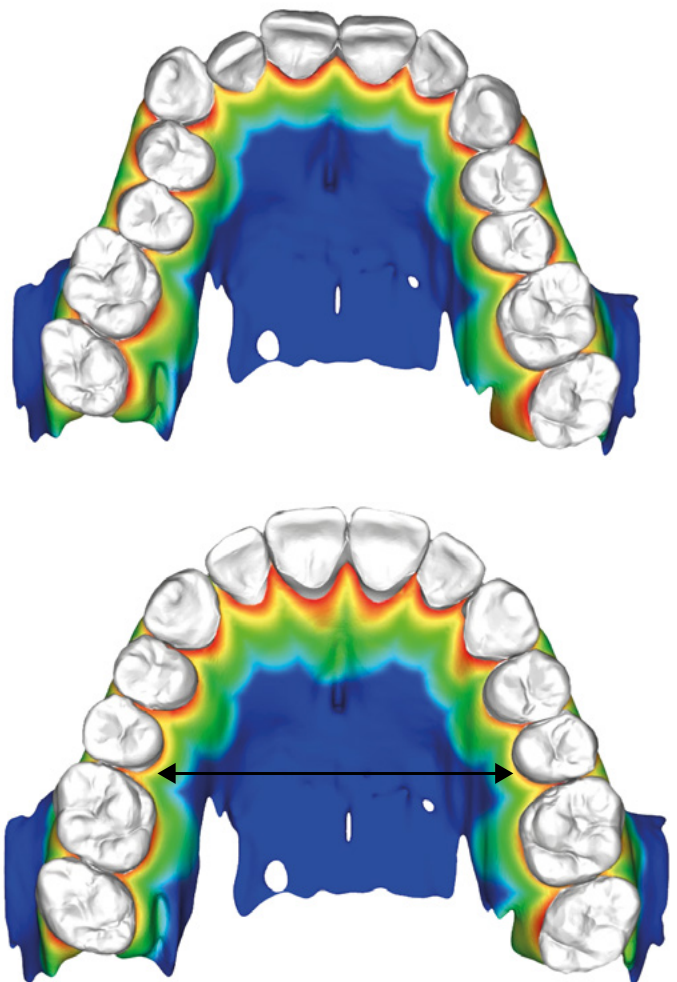


Straight cut and optimal plastic rigidity

Contact us at [3DPredict.com](https://3DPredict.com) or at [education@3dpredict.com](mailto:education@3dpredict.com)  
for more information or a [demo with a Clinical Consultant](#).

## DEEP CBCT® ANALYSIS: ROOT AND BONE-BASED 3D PLAN MODELLING REDUCES THE NUMBER OF MID-COURSE CORRECTIONS AND REFINEMENTS BY HALF.

Deep CBCT® Analysis:  
bone module. Allows to assess  
cortical plate width and plan  
tooth movements within  
the bone to avoid refinements  
and cut treatment time by 30%.



4mm Arch expansion

To Book a demo with our Clinical Consultant and see how staging based on Deep CBCT® Analysis may be of value to your dental office, please contact us at [education@3Dpredict.com](mailto:education@3Dpredict.com) or choose a convenient time via [Calendly](#).

